



vindhya
Sparsh
FEEL OF HAPPINESS

FEELINGS
LAST FOREVER



“SPARSH”

(a revered Hindi synonym for the word “Touch”) is one of the most valued sensations in the world.

It is an essential aspect of human interaction and connection. At Sparsh, we understand the importance of touch and have designed our spaces to provide a tactile experience that is both comforting luxurious.

From the smooth finishes of our walls to the inviting textures of our flooring, every aspect of our project has been crafted to stimulate the sense of touch. Experience the true essence of living at Sparsh.

Welcome to

 **vindhya**
Sparsh
FEEL OF HAPPINESS

“ It is not you who stay inside your home
It is your home which stays inside you ”

vindhya
parsh
FEEL OF HAPPINESS





INTERNAL SPECIFICATIONS

FOUNDATION	Earthquake resistant reinforced concrete cement structure
EXTERNAL WALL	All guard water proof base paint
INTERNAL WALL	Wall Putty
DOORS	Main Door - Flush door with one side teak finish Main door fittings Internal Doors - Flush doors with oil paint
WINDOWS	Anodized aluminium sliding windows Grill option at extra cost
FLOORING	Vitrified tiles in entire flat Kitchen & Toilet with anti-skid Ceramic tiles Staircase with half landing granite balance kota/marble Lobby with Vitrified tiles Lift fascia of Granite tiles
KITCHEN	Granite counter Stainless steel sink Dado of Ceramic tiles upto 3 ft. above the counter platform Electrical point for refrigerator, water purifier, microwave chimney or exhaust fan
TOILET	Dado glazed tiles on the walls upto door level Premium quality sanitary and CP fittings (reputed make) Electrical point for geyser and exhaust fan Plumbing provision for hot/cold water line
ELECTRICALS	Concealed copper wiring with central MCB (reputed make) Modular switches (reputed make) Sufficient number of plug points Provision for split AC points Provisions for cable TV, telephone + broadband wiring Door bell point at main entrance
LIFT	5 passenger semi-automatic (reputed make)

SPARSH has been planned to deliver on all counts and to create a residential space that will live-up to its quality in every aspect of modern day living

// It is not just a pack of homes.
This is a place where living gets
completeness //



vindhya
Sparsh
FEEL OF HAPPINESS

Touch of Luxury

An array of aesthetic and luxurious amenities completing the privileges of a great lifestyle



- Deck
- Party Lawn
- Shaded Sitting Zone
- Walking Trail
- Turf
- Yoga Deck with Retractable Roof
- Turf / Zen Garden
- Swimming Pool
- Kid's Pool
- Shower Zone
- Gents Toilet & Changing Room
- Ladies Toilet & Changing Room
- Utilities :**
- Power back up*
- Car Parking
- Fire Fighting Equipments
- Security with CCTV (Common areas)
- Intercom (Security to Flat)

*at extra cost



AC Community Hall at 5th Floor



Multipurpose Court at 1st Floor

Touch of Luxury

An array of aesthetic and luxurious amenities completing the privileges of a great lifestyle



- Deck
- Party Lawn
- Shaded Sitting Zone
- Walking Trail
- Turf
- Yoga Deck with Retractable Roof
- Turf / Zen Garden
- Swimming Pool
- Kid's Pool
- Shower Zone
- Gents Toilet & Changing Room
- Ladies Toilet & Changing Room
- Utilities :**
- Power back up*
- Car Parking
- Fire Fighting Equipments
- Security with CCTV (Common areas)
- Intercom (Security to Flat)

*at extra cost



Open to Sky Party Lawn



Open to Sky Infinity Swimming Pool



Open to Sky Kid's Play Zone



Yoga & Meditation Deck

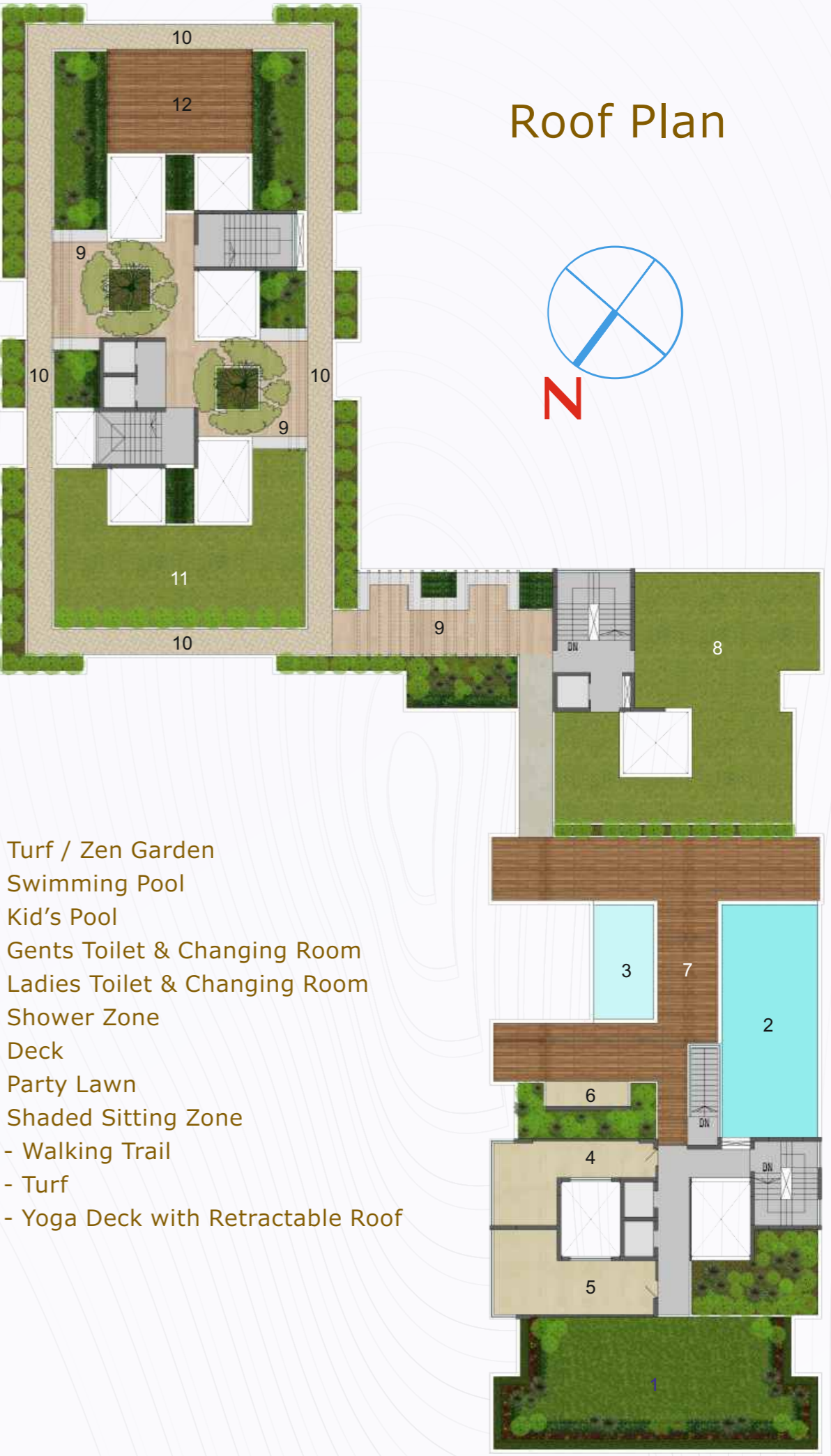
Zen Garden

Ground Floor Plan



- 1 - Gate
- 2 - Stair
- 3 - Lift
- 4 - Lift
- 5 - Lift
- 6 - Lift
- 7 - Lift Lobby
- 8 - Lift Lobby
- 9 - Lift Lobby
- 10 - Covered Car Parking Area
- 11 - Open Car Parking Area
- 12 - Space for Generator
- 13 - Driveway
- 14 - Security Kiosk
- 15 - Toilet
- 16 - Toilet

Roof Plan



- 1 - Turf / Zen Garden
- 2 - Swimming Pool
- 3 - Kid's Pool
- 4 - Gents Toilet & Changing Room
- 5 - Ladies Toilet & Changing Room
- 6 - Shower Zone
- 7 - Deck
- 8 - Party Lawn
- 9 - Shaded Sitting Zone
- 10 - Walking Trail
- 11 - Turf
- 12 - Yoga Deck with Retractable Roof

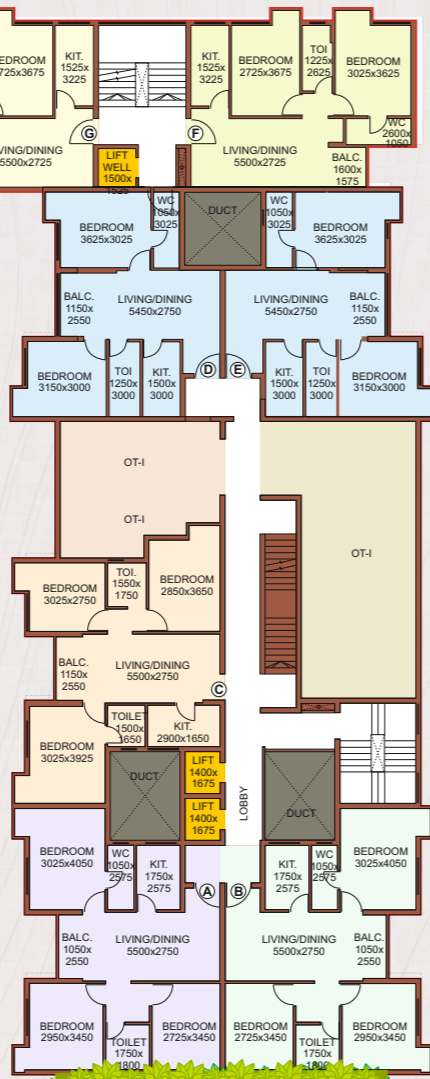
Typical Floor Plan

(1st - 4th Floor)



AREA STATEMENT

Flat	Carpet Area	Balcony Area	Built up Area	S. Built up Area
A	708	28	808	1097
B	708	28	808	1097
C	660	31	771	1047
D	560	31	649	881
E	560	31	655	889
F	567	27	653	887
G	567	27	650	883
H	700	27	787	1069
I	714	27	813	1104
J	559	31	662	899
K	559	31	662	899
L	714	27	807	1096
M	714	27	807	1096



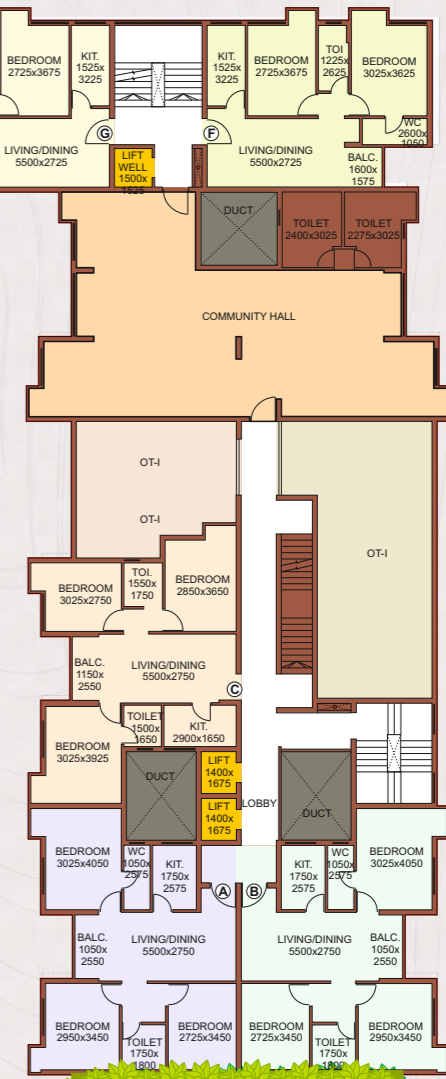
R O A D

5th Floor Plan



AREA STATEMENT

Flat	Carpet Area	Balcony Area	Built up Area	S. Built up Area
A	708	28	808	1097
B	708	28	808	1097
C	660	31	771	1047
F	567	27	653	887
G	567	27	650	883
H	700	27	787	1069
I	714	27	813	1104
J	559	31	662	899
K	559	31	662	899
L	714	27	807	1096
M	714	27	807	1096

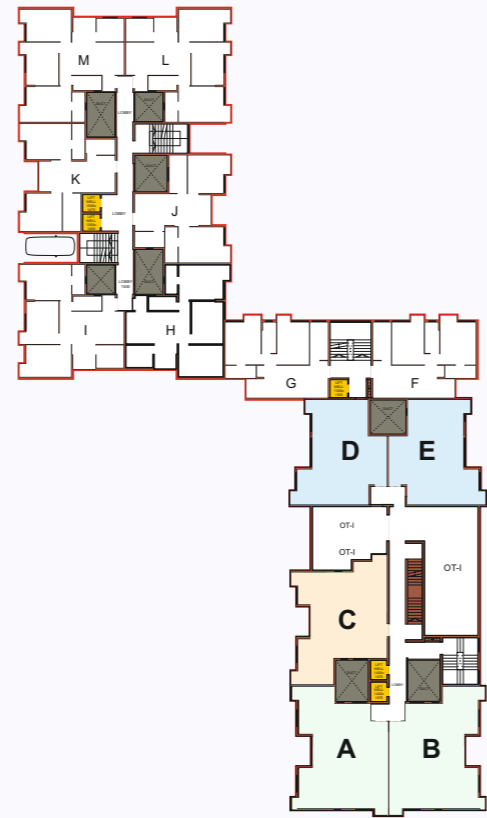


R O A D

3D FURNITURE LAYOUT



Type A and B



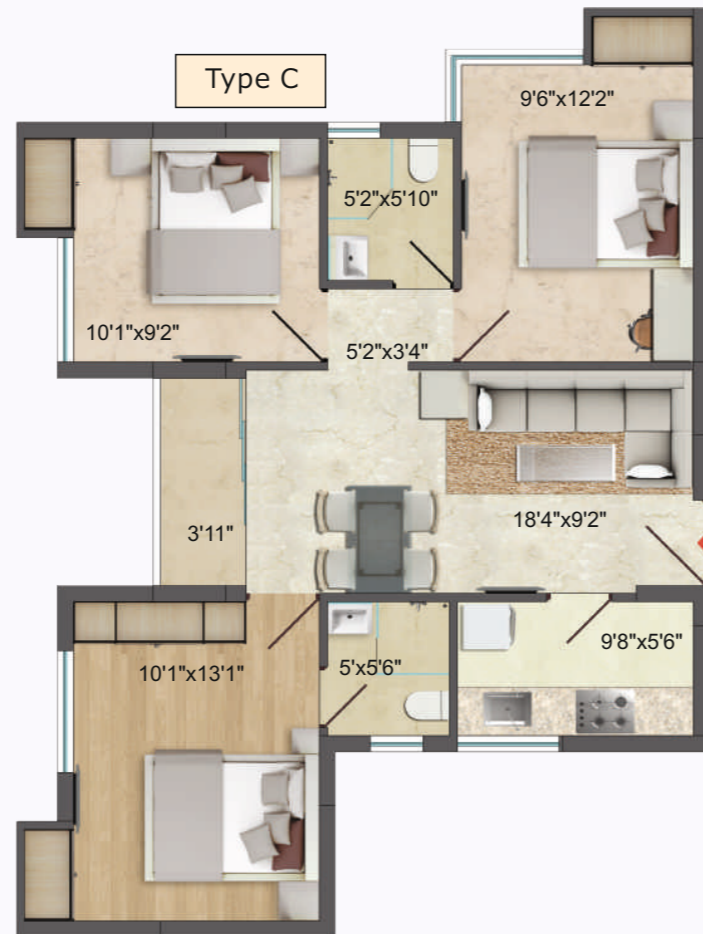
3D FURNITURE LAYOUT



Type F and G



Type D and E



Type C

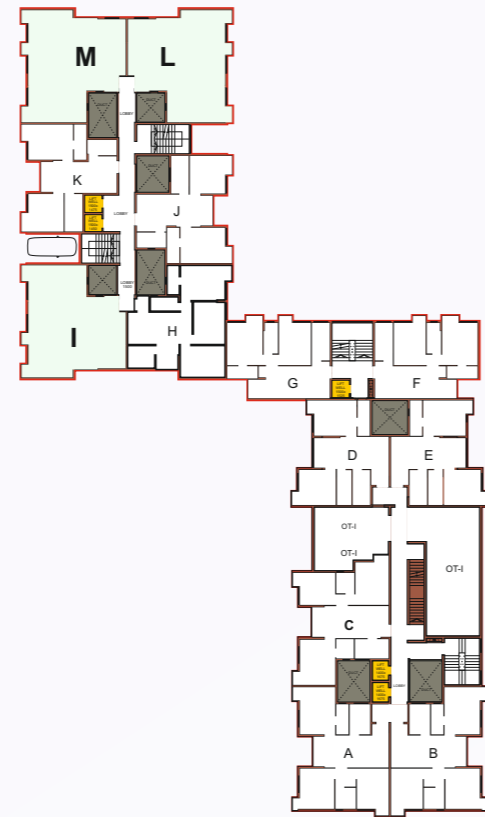


Type H



Type J and K

3D FURNITURE LAYOUT



Touching hearts through trust and commitment

Vindhya Group has been at the forefront of real estate development for more than a decade. The projects undertaken by the group have a highly evolved value-added positioning. Every project is well conceived to give you the best in high-quality living. With a team as strong as the pillars of their projects, comprising of civil engineers, quality assurance supervisors and other business heads with a wide range of experience in their respective fields, Vindhya Group makes your home-buying experience pleasant, memorable and effortless.

Vindhya Group was formed by our Chairman, Mr. R. S. Agarwal, with a vision to build an organization on the foundation of quality, Reliability, Trust and Gratitude. With over more than 15 years of experience in the real estate industry, Mr. Agarwal has had a significant impact on the landscape of housing in Kolkata, helping his customers find their humble abodes.



LOCATION MAP



SITE : 133, Dwarir Road, Dhamaitala, Kolkata

PROJECT BY



Commitment to Reliability

40/1, Prince Anwar Shah Road
Kolkata - 700 033

Phone : (033) 4803 9711

www.vindhyarealty.com

Developers

Animesh Nirman LLP

Reg. Office :

40/5 Strand Road, Kolkata - 700 001

Administrative Office :

40/1 Prince Anwar Shah Road, Kolkata - 700 033

Email : vindhyasparsh@gmail.com

Architect

Shayan De

16B, Maharaja Nand Kumar Road
Kolkata - 700 029

Enquiries : 90 73 90 4181